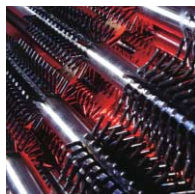




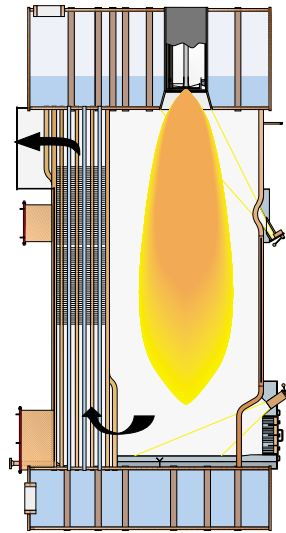
The large capacity
modular boiler plant

MISSION™ OL

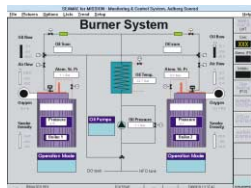


MISSION™ OL is a high performance, large capacity oil-fired marine boiler with a steam capacity range from 12 to 55 t/h. MISSION™ OL is a vertical top-fired two-drum boiler constructed from standard modules. The boiler is delivered as a pre-assembled unit with an integrated steam atomising burner and control system.

MISSION™ OL - a modular boiler



The convective section of the MISSION™ OL boiler consists of straight tubes. These tubes have been extended by pins bent to create a unique flue gas flow, enhancing the heat transfer and lowering the pressure loss across the convective section. The result: a compact and efficient heat transfer surface.



Operation and control of the MISSION™ OL boiler plant are facilitated by a reliable and user-friendly microprocessor based control system. A PC, conveniently placed in the control room, with a graphical user interface enables remote control and monitoring of the boiler and burner plant. From the system all kinds of diagnostics and statistical data may be retrieved, which is an invaluable help in fault tracing situations.

Reliability, high performance and low maintenance costs were in focus as Aalborg Industries developed the MISSION™ OL boiler plant. This clearly shows in the integration of a steam atomising burner in the boiler design. The MISSION™ OL is designed in accordance with the Aalborg Industries modular boiler concept which makes installation onboard ships extremely quick and easy.

Construction

The MISSION™ OL is a large capacity oil-fired steam boiler in the 12 to 55 t/h capacity range.

The two-drum cylindrical boiler design features straight tubes directly connecting the water and steam drums. This ensures safe circulation with no risk of overheating and subsequent burnout of the tubes.

Thanks to gastight, polygonal membrane wall panels the sturdily constructed furnace is resistant to gas pulsations.

The integrated burner design reduces refractory to a protective layer at the

bottom of the furnace and around the access doors.

Burner

The MISSION™ OL boiler comes with the advanced KBSD steam atomising burner. This burner has been specially designed to fit the MISSION™ OL boiler, providing excellent burner performance and significant benefits:

- Optimal combustion even with the lowest grades of heavy fuel oil owing to purposeful furnace geometry
- High turn-down ratio
- Inert gas production even at low loads
- Low NO_x and particulate emission rates
- Reliable ignition system

Control system

The microprocessor based control system can be operated from either the local control panel placed on top of the boiler or from the PC that comes with the boiler plant. The power section of the control system with motor starters etc. can be placed anywhere in the engine room.

Customer benefits



Water circulation

The dimensioning of the external non-heated downcomers ensures reliable and safe water circulation.

Compact design

The slim top-fired design makes the boiler perfect for use in e.g. tankers. The MISSION™ OL is a lightweight boiler, requiring a minimum of deck space.

Ready for installation

The MISSION™ OL is delivered ready for immediate installation. All valves and boiler equipment are pre-mounted before delivery as are most of the cabling of the control panel.

Easy operation

The MISSION™ OL design is unrivalled when it comes to easy day-to-day operation and supervision. Burner, control panel and all relevant connections such as valves and water level controls can be conveniently operated from the platform on top of the boiler.

Minimum maintenance

The boiler is designed with a high flue gas velocity in the convection tube bank which causes a selfcleaning effect on the heat transfer surface. Soot blowing equipment is supplied with the boiler in a standard delivery.

Water washing of the heating surface can easily be carried out from the top of the tube bank.

A differential pressure transmitter controls and monitors the water level and requires virtually no maintenance.

Easy inspection

Several inspection doors and man-holes provide easy access for inspection of all vital parts of the boiler.

Global service

Boilers from Aalborg Industries are in use all over the world. Therefore after sales service and spare parts are readily available on every continent.



*Front page photo:
Product tanker "SILVIA" built at Daedong
Shipbuilding Co. in Korea.
Equipped with 1 off 15 t/h MISSION™ OL
boiler with KBSD burner and 2 off AV9
economisers.*



A partnership based on mutual trust and understanding

Aalborg Industries is the world's leading supplier of marine boilers. Shipyards and owners all over the world have, by now, purchased more than 20,000 Aalborg Industries boilers for all purposes on board tankers, bulk carriers, container vessels and cruise ships.



Aalborg Industries is dedicated to developing reliable boilers and burners based on a philosophy of life-long commitment to any product delivered. Only in this way it is possible to build lasting, customer focused partnerships.

Visit our website:

www.aalborg-industries.com

Business centre:

Aalborg Industries A/S
P O Box 844, Gasvaerksvej 24
9100 Aalborg, Denmark
Tel. +45 99 30 40 00
+45 40 16 66 86 (24 hrs.)
Fax. +45 98 16 83 16
E-mail: aal@aalborg-industries.dk

Your contacts:

- **China:** Tel. +86 21 6886 3565
+86 411 270 9291
- **Finland:** Tel. +358 2 838 3100
- **Japan:** Tel. +81 78 271 5720
- **South Korea:** Tel. +82 51 703 6162
- **Sweden:** Tel. +46 8 580 243 00